

CHC HOME

A woman with her hair in a bun, wearing a white sleeveless top and blue jeans, is bending over on a green lawn. She is reaching out with both hands to help a young girl in a pink dress walk. The girl is walking away from the camera towards the woman. The background is a solid green color.

Nela Manor

Horizon House

Meadowlark Lane

Stepping Up!

Through our housing programs
we build a better tomorrow.

Annual Report
Supplemental
2005



The Community Health Center is committed to enhancing the quality of life. We are a leader in providing effective services for compulsive and addictive disorders, health care, life skills development, prevention, housing, wellness and rehabilitation.



www.commhealthcenter.org

CHCHome

RESIDENTIAL TREATMENT PROGRAMS

Pg4

RAMAR

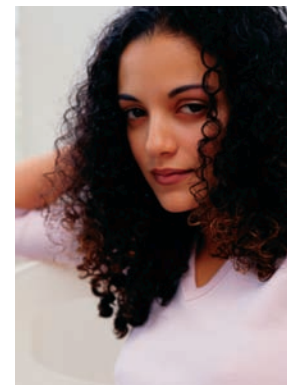
TRANSITIONAL HOUSING

Burton Sherman Homes

Horizon House

Peachtree Estates I & II

Project Hope



CONTENTS

Pg6

PERMANENT HOUSING

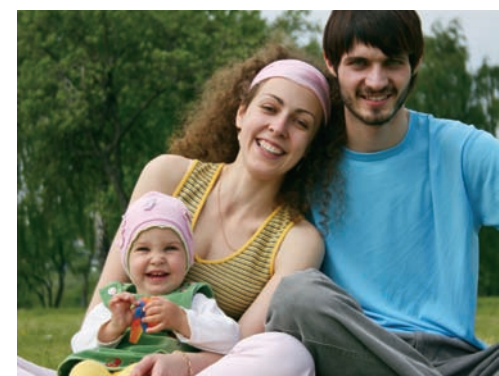
Meadowlark Lane

Nela Manor & Covington Gardens

Pheasant's Run & Quail's Nest

Summit Terrace

Wren's Way & Pigeon Creek



LAUNCH PADS

**Home, sweet healing home,
in our residential treatment
and transitional housing.**



RESIDENTIAL TREATMENT PROGRAM **RAMAR**

RAMAR (Rocco Antenucci Memorial Adult Residential Facility) provides critical intensive counseling and support services for both male and female patients.

In 2005, RAMAR provided residential services to 176 chronically afflicted substance abusers. Many patients at RAMAR have secondary diagnoses and are medically unstable or are suffering from primary health challenges. Treatment focuses on intensive drug and alcohol counseling which provides social, vocational, health and life skills training in a safe and secure therapeutic community. Emphasis is placed on improving all facets of the individual's life.

Approximately 53% of residential patients successfully complete the program. Our successful patients are then transferred to less restrictive levels of care in which they continue to practice and maintain their newly-acquired relapse prevention skills, obtain employment and rebuild relationships with their extended family.

TRANSITIONAL HOUSING **Burton/Sherman Homes**

The Community Health Center offers three-quarter way housing for single men and women at our Burton and Sherman Homes. These homes provide a safe and sober environment for those patients who have successfully completed a treatment program. Wrap-around services for residents include case management, after-care, vocational and medical services. Community Health Center staff is also able to provide assistance in helping guide residents as they plan for their future after they leave our three-quarter way housing program.

Horizon House

Horizon House is a two-year transitional program for young adults ages 18–22 in Summit County. Located at scattered sites in Akron, a total of nine bedrooms are available for homeless young adults in Summit County.

Summit County has approximately 20,000 citizens between the ages of 18–22. Of that population, over 300 go homeless every year. Young adults who are homeless are often also in need of intense supportive services and life skills development, however they are currently ineligible for government funded programming.

In July 2005, Horizon House opened its first location to address this growing problem in our area. In 2005 five residents entered our first pilot program. Technically, this population is considered to be adults; however, these more appropriately termed older adolescents, are not always capable of fully providing for themselves. That is



why the Community Health Center has designed this unique pilot housing program; to reach out to this high-risk group during the transitional period between adolescence and adulthood.

Peachtree Estates I & II

Peachtree Estates I & II are housing programs that focus on reuniting recovering single parents and their children while assisting them toward self-sufficiency. In 2005 Peachtree was home to 14 families and their children. Single parents in this program receive intensive ongoing services such as after-care counseling, primary health care, vocational services, family counseling and parenting classes. In addition to these services, both childcare and transportation are available to all residents.

Our Future: Peachtree III

In 2007, look for the construction of Peachtree III in Cuyahoga Falls. This housing project was recently awarded over \$826,400 as part of the \$135 million in funds distributed nationwide for Section 811 housing by the U. S. Department of Housing and Urban Development (HUD). Peachtree III will be the third and final phase of Peachtree Estates which was originally opened in 2001 with the goal of reuniting single parents in recovery with their children.

This new phase will add six more units and a community room. Peachtree III will feature three-bedroom units in the development. By mid-2007, Peachtree Estates will be providing 20 units of housing for families in recovery.

"This much needed addition allows more services to be provided at Peachtree and brings our residents one step closer to a traditional neighborhood setting," said Corliss Newsome, OMDC's associate director. Peachtree Estates is located on Wyoga Lake Road in Cuyahoga Falls.

Recent grad thankful for program

Project Hope

Steve entered Project Hope after establishing a 60-day period of sobriety at the Interval Brotherhood Home. Two years later he is a successful graduate of the program, moving forward towards a bright future. "When Steve came to the OMDC in need of housing he was a perfect candidate for Project Hope because he was independent, sober and committed to his recovery program," commented Jackie Hemsworth of the OMDC.

Project Hope is a unique program that offers single participants a two year rent subsidy in a private apartment while they continue to participate in our recovery programs. Hope offers after-care treatment, vocational services, case management and community support while they work toward self-sufficiency. In 2005, 20 single individuals participated in Project Hope. Four residents graduated out of the program and gained total independent living.

"Within a week of entering the program he had secured a full-time permanent job, and continued with this same job the entire time he was in the Hope program," added Jackie. Soon Steve was also able to share a large portion of the parenting of his two young children.

One major benefit of Project Hope is a built-in savings account for each resident. A portion of their rent (meaning \$25 or 30% of gross income per month) is placed into a savings account on behalf of the resident. After completion of the program, the savings is presented to the graduate to be used at their discretion for their next home or possibly a car. In Steve's case, he has graduated from Hope with over \$10,500 in savings that he will put towards his future.



Clockwise at upper left: Nela Manor, Quail's Nest, Pheasant's Run. At right: Walter, a Meadowlark Lane resident, proudly welcomes visitors to a new unit ribbon-cutting in June, 2005.

Meadowlark Lane

Opened in June 2005, Meadowlark Lane units in Lakemore and Cuyahoga Falls provide permanent housing for 15 low-income homeless men and women recovering from chemical dependency/mental illness and/or other disabilities (dually diagnosed). These housing developments provide residents with a safe and sober environment. Funding from the HUD Supportive Housing Program provides for the addition of a wide variety of educational, behavioral and primary health care services, plus social services.

Meadowlark Lane fills a critical gap in Summit County for low-income homeless individuals, serving as the next step for those leaving a transitional housing program or Section 8 housing. The OMCDC and CHC collaborate with area employers identified as partners in welfare reform and established community self-sufficiency programs such as H.M. Life Opportunity Services, Akron Metropolitan Housing Authority and the Summit County Job and Family Services Department to locate participants. In addition, a wide variety of educational, social and health services will be integrated into this effort.

Section 8 Housing: Nela Manor & Covington Gardens

Opened in January 2005, Nela Manor is made up of 35-units of one-, two- and three-bedroom apartments located in three buildings located on West Market Street. Nela Manor is the southeast corner of the Highland Square Historical Improvement Project. Within two weeks of opening Nela Manor was totally full. The Nela Manor

Apartments are subsidized through project-based Section 8 certificates. Over 90% of the current residents of Nela Manor earn less than 35% of the Area Median Income (AMI) for Summit County.

The completion of Nela Manor adds historic value to the community, and enhances the historic improvement project by greatly improving security and reducing criminal activities in the Highland Square Corridor. In 2006 Nela Manor was designated as a historic site by the National Registry of Historic Places in the United States.

Covington Gardens is a 14-unit apartment building located in Cuyahoga County. Like Nela Manor, Covington Gardens is subsidized by Section 8 certificates.

Both housing projects are owned by the Community Health Center Foundation and will be preserved to serve those low-income populations in their respective counties.

Pheasant's Run & Quail's Nest

Pheasant's Run and Quail's Nest serve as group homes for four men and four women respectively. While residing in these homes, residents receive after-care treatment, vocational services, intensive case management and transportation. In 2005 these group homes helped eight individuals further their recovery efforts and move on to less restrictive settings.

Continued on next page

Continued from previous page

Summit Terrace

Summit Terrace is a 20-unit apartment complex located in southeast Akron providing independent housing, case management and support services for the dually-diagnosed homeless of Summit County. Along with our partners, Portage Path Behavioral Health Systems and Community Support Services, we are providing quality housing and after-care services, as well as a sense of belonging to this otherwise invisible population.

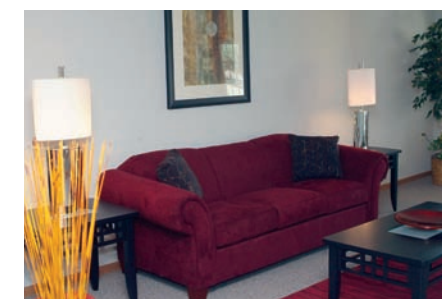
The community room at Summit Terrace has experienced a transformation over the past couple of years by the opening of the Ballinger TBI Clubhouse, the first clubhouse in Summit County for individuals affected by a Traumatic Brain Injury (TBI). This local organization works completely with a volunteer staff and is open to Summit Terrace residents, the general public and friends and family members who deal with TBI on a daily basis. Through their efforts the clubhouse provides activities and support groups such as gardening, working on computers and other educational activities. For more information visit their web site at www.ballingerclubhouse.org.

Wren's Way and Pigeon Creek

Wren's Way is 14 units of permanent housing for individuals with developmental, physical or mental handicaps in Wayne County. This permanent housing development fulfills the need for safe, secure and dependable housing for this population in-need.

Pigeon Creek is a 26-unit housing program designed for low-income elderly individuals living in Wayne County. Often times the golden years are thought to be a guaranteed worry-free time, however many senior citizens have little money put away for retirement, housing and medical necessities. This permanent housing unit fulfills the need for safe, secure and dependable housing for this population.

All tenants of both programs are required to be current residents of Wayne County. Wren's Way and Pigeon Creek are located in a fast-growing area of Wooster, Ohio. Within a mile radius one can find several shopping and grocery centers, major medical facilities, numerous houses of worship and a variety of recreational activities.



Below: Pigeon Creek, a new project in Wayne County.

Horizon House

See the story behind this exciting program.
Call 330.315.3715

CommStaff is a division of the OMCDC and serves as a full-service staffing agency in the Summit County area. Serving individuals seeking jobs and employers seeking dependable employment services,

CommStaff specializes in all-inclusive human resources. We provide competitive rates, drug-free workplace training, GED assistance and resume classes for anyone looking for employment. We specialize in clerical positions, banquet servers, factory and industrial jobs to drivers and electricians.

For more information about CommStaff please call 330.315.HIRE or visit www.commstaff.com.

CommStaff

The Ohio Multi-County Development Corporation (OMCDC)

is the managing partner of over 225 units of Community Health Center housing and works cooperatively with the Community Health Center to ensure residents maintain recovery, adhere to a treatment plan and abide by a lease and other residential guidelines in accordance with Fair Housing.

The OMCDC is a wholly-owned subsidiary of the Community Health Center Foundation and is dedicated to meeting the housing needs of low and moderate income persons in Carroll, Cuyahoga, Holmes, Lorain, Medina, Portage, Stark, Summit, and Wayne counties. For more information about the OMCDC visit www.omcdc.org. For housing availability and inquiries, call 330.315.3718.



Ohio Multi-County Development Corporation

Building a better tomorrow

The OMCDC receives funding from the following organizations:

Summit County Dept. of Community and Economic Development
Ohio Department of Development
First Energy Foundation
Ronald McDonald Charities of Northeastern Ohio
Chase Bank

City of Akron Department of Planning & Urban Development
Wells Fargo Housing Foundation
U.S. Department of Housing & Urban Development
R. C. Musson & Katherine M. Musson Charitable Foundation
Federal Home Loan Bank of Chicago
Lloyd L. & Louise K. Smith Memorial Foundation

Charles E. & Mabel M. Ritchie Memorial Foundation
GAR Foundation
Summit County Housing Advisory Board
Sisler McFawn Foundation
Akron Community Foundation
Ohio Community Development Finance Fund

Glenn R. & Alice V. Boggess Memorial Foundation
Laura R. & Lucian Q. Moffitt Foundation
Northern Ohio Golf Charities
Lucy & Emily Beasley Charitable Trust



OMCDC is a member organization of: Coalition on Homelessness and Housing in Ohio (COHHIO), Ohio Finance Fund, Ohio Community Development Corporation, Enterprise Foundation and the Summit County Continuum of Care.

